

Chapter I

Rhythmic Organization, the Bar-line and Meter.

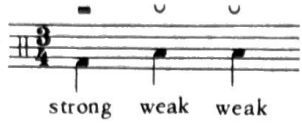
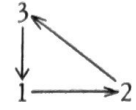
A vertical line divides the pulse into bars or measures. The first beat after each bar-line is always the downbeat (strong).

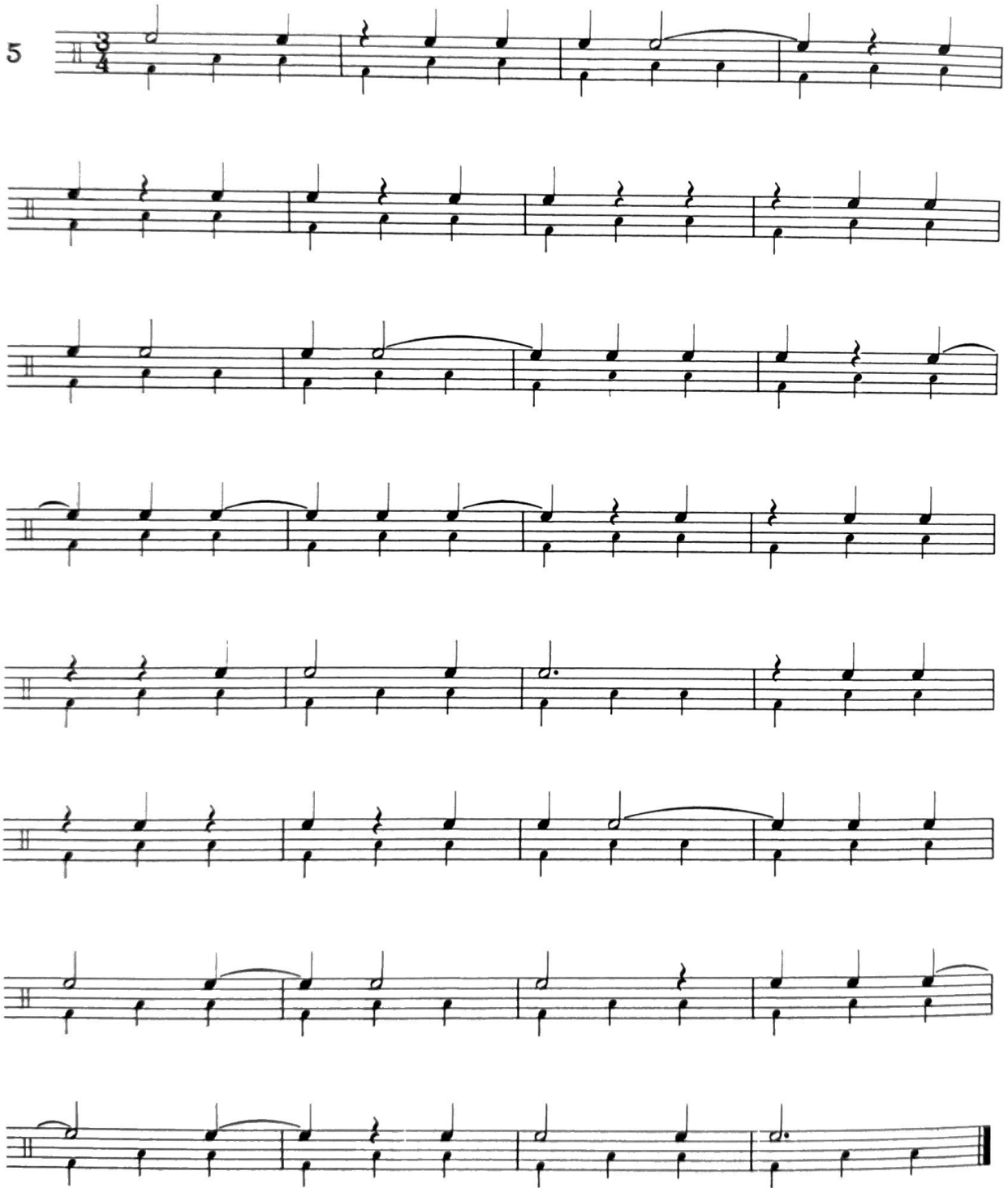
Two quarter-note beats per bar: $\frac{2}{4}$ meter =  Conductor's symbol: 1 ↓ downbeat 2 ↑ upbeat

(A tie connecting two notes may go across the bar-line.)

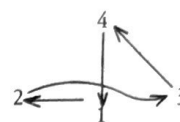
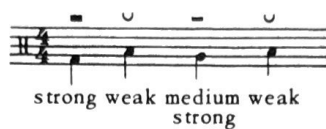
4



Three quarter-note beats per bar: $\frac{3}{4}$ meter =  

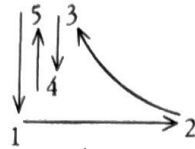
5 

Four quarter-note beats per bar: $\frac{4}{4}$ meter =



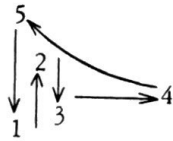
Five quarter-note beats per bar: $\frac{5}{4}$ is a combination of 3+2 or 2+3.

$\frac{5}{4}$ meter (3+2) = ♩ ♩ ♩ : ♩ ♩



7

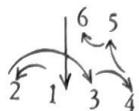
$\frac{5}{4}$ meter (2+3) = ♩ : ♩ ♩ ♩



8

Six quarter-note beats per bar: $\frac{6}{4}$ meter,

usually 3+3 = $\text{— } \cup \cup \cup \text{— } \cup \cup \cup$ 

sometimes 2+2+2 = $\text{— } \cup \cup \text{— } \cup \cup \text{— } \cup \cup$ 

10